

# RIDS-Switzerland/Nepal Summary Project Report 2018

## Introduction

2018 turned out to be another year during which significant work and progress in the long-term, holistic community development of 6 mountain village communities in Jumla and Humla took place. And for that, RIDS-Switzerland would like to express thanks our following project partners, whose generous financial support enabled life improving changes for many families in the remote north-western part of the Nepal Himalayas.

- Symphysis (CH)
- REPIC (CH)
- Swisslos BL (CH)
- Protestant Church St. Gallen (CH)
- The Third Millennium Foundation (CH)
- Friends of Nepal (FoN) (Western Australia)
- Gruener Fisch (CH)
- Friends of RIDS, private people and families from all over the world



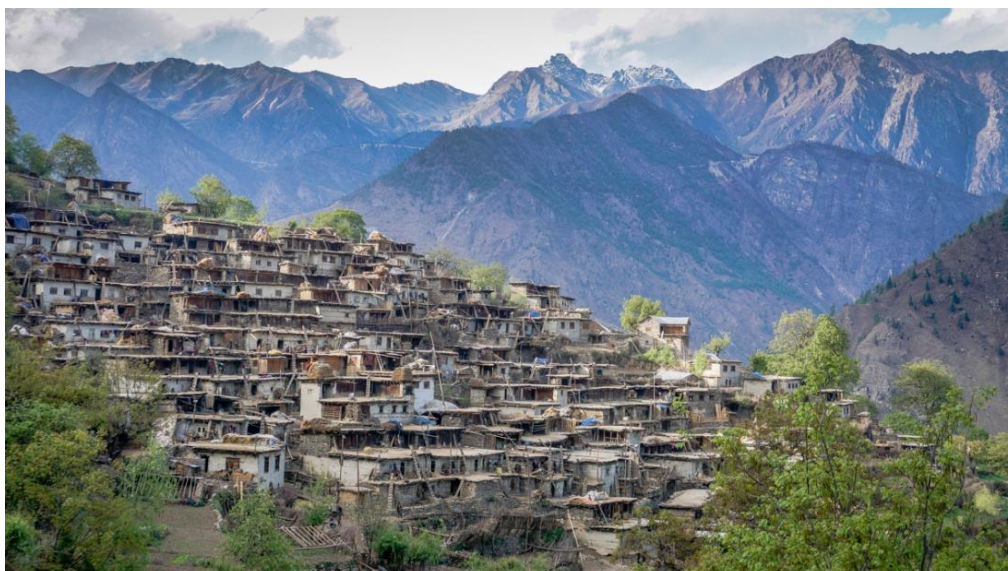
Through their financial support, RIDS-Switzerland/Nepal were able to partner and work with the following village communities in the remote and impoverished north-western districts of Humla and Jumla in Nepal:

- 1) Syada village (216 families) in Humla
- 2) Mohari village (42 families) in Jumla
- 3) Chaura village (210 families) in Jumla
- 4) Dopa village (65 families) in Jumla
- 5) Kholapari village (40 families) in Jumla
- 6) High-Altitude Biogas Plants in Jumla



## A) Humla Project Activities 2018

- 1) **Syada Village High-Altitude Greenhouses (GH) Building and Training Videos 2017 - 2019:** Based on the success of the Swisslos BL funded Syada village drinking water system project, implemented in 2016-2017, Swisslos BL agreed to fund the building of 80 high-altitude greenhouses to produce more vegetables for 80 families in Syada. Additionally, 11 instructional videos in Nepali language with the aim to enable illiterate people, especially women who never could go to school, to learn new practical skills on how to build, plant and operate a greenhouse in this high-altitude area, extending the availability of vegetables from 3 months per year to 10 months per year, were created and are now available through the RIDS-Nepal YouTube channel (<https://www.youtube.com/playlist?list=PLM5tNUriiE49lBkt4TVQScwvnfKpSCBU> see videos 5 to 16).
- 2) **Syada Smokeless Metal Stove and Pit Latrine Project 2018-2019:** Supported by the “Protestant Church of St. Gallen”, the “Third Millennium Foundation”, and the “Gruener Fisch” we were able to work with 50 families in Syada to manufacture, build, install and train them in the correct use of their new smokeless metal stove and a pit latrine respectively. These two programs are part of the “Family of 4” ([http://www.rids-nepal.org/index.php/Family\\_of\\_4.html](http://www.rids-nepal.org/index.php/Family_of_4.html)) improving each of the 50 families’ indoor and outdoor living and hygienic conditions drastically.



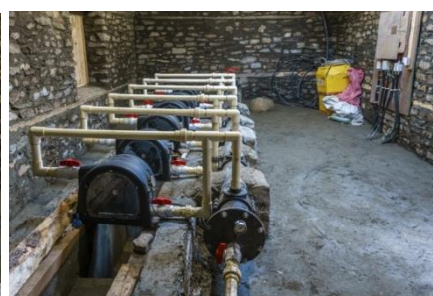
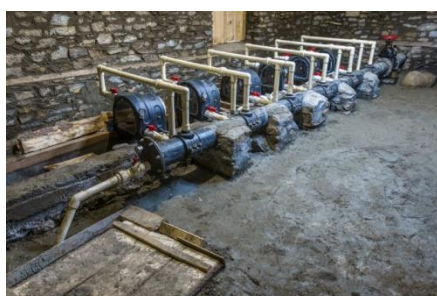
Syada Village (2'800 m.a.s.l.), 216 families, 1250 people ([http://www.rids-nepal.org/images/google\\_earth/Syada.kmz](http://www.rids-nepal.org/images/google_earth/Syada.kmz)) .

## B) Jumla Project Activities 2018

- 1) **Mohari Village Holistic Community Development (HCD) Project–Project Period 2010 - 2022:** After the civil war ended and peace was established, RIDS-Nepal started again to work in close partnership with the Mohari village community in their long-term HCD project in 2010, addressing the village's own identified needs. Mohari is today a "Model Village" for holistic community development, visited by several official government officers to see and confirm the changes heard and spoken of. Beside all the other ongoing community project activities (toilets, stoves, greenhouses, training and follow-up for new homes) as part of the long-term development in Mohari village, the main project in 2018 was the building and startup of the "Modular Pico-Hydro Power Plant" project. This is a new development in regard to rural village electrification through a small hydro power plant with high a capacity factor, developed by RIDS since early 2016.



Mohari Village (3'200 m.a.s.l.), 42 families, 240 people. ([http://www.rids-nepal.org/images/google\\_earth/Mohari.kmz](http://www.rids-nepal.org/images/google_earth/Mohari.kmz))  
Left pict.: Power house in middle of Village, Turbine house at bottom (blue roof). Right picture: Power house in village



Modular Pico-Hydro Power Plant: 6 x 1kW PowerSpout Pelton Turbines running in series at 50m head and 24 L/s water.



Mohari families inspecting their new Pico-Hydro Power power plant shortly after the initial startup end of Nov. 2018

- 2) **Chaura Holistic Community Development (HCD) Project– Planned Project Period 2018 – 2020:** After the successful 4-year HCD project in partnership with the three villages of Huri, Chuma and Godhigaun, funded by Symphasis, Symphasis approved funding for the 3-years HCD project with Chaura village, which started in January 2018. In the first of the three years project period the following has been achieved:
- The Chaura PIC (Project Implementation Committee) has been formed for the 3-years project
  - 190 new Pit latrines (PL) built and in use by the trained families
  - 107 new Smokeless Meal Stoves (SMS) "RIDS Jumla" design are installed and in use by the trained families
  - 3 new Karnali Technical School students started their 2½ years apprenticeship program in Jumla
  - 100 farmers were identified and trained how to build, operate and maintain a high-altitude greenhouse
  - 100 solar driers have been ordered and 100 farmers were identified and trained how to use them
  - 150 slow sand water filters have been ordered and 150 farmers were identified and trained how to use them
  - Two, one-day health and hygiene trainings for mothers have been conducted in Chaura village



SMS installation and use; PL building and use; Mother health and hygiene training; PIC weekly meeting in Chaura

### 3) Dopa-Kholapari Holistic Community Development (HCD) Project– Planned Project Period 2013 - 2023:

The long-term Dopa-Kholapari HCD project has been faithfully supported every year since 2013 by the NGO FoN (Friends of Nepal) from Perth, Western Australia as well as several private people/friends' support. In 2018, we were able to build and install in Dopa-Kholapari villages with 3 families new Pit Latrines and with 12 families installed a new RIDS-Nepal smokeless metal stove respectively. With 10 families we built high-altitude Greenhouses. Further, 2 new improved water mills have been built with the whole village community for the benefit of all the 105 families. All these families were trained in the correct use and maintenance of their new infrastructure. One new student from Dopa village passed the Karnali Technical School (KTS) admission test and thus has been enrolled for his 2½ years course sub-overseer apprenticeship in Jumla.



In Dopa-Kholapari: High-Altitude Greenhousea; PL building; Improved local milla; SMS installation and use;

- 4) **High-Altitude Biogas Production Baseline Survey–Project Period Jan. 2016 – Dec. 2018:** Based on the experience of the first two anaerobic biogas digesters to produce biogas from local cow dung and he family’s pit latrine in Jumla bazar, two further improved anaerobic biogas digesters systems have been built and started up in Mohari at 3200 meter altitude.



In Mohari village: The new developed RIDS-Switzerland/Nepal high-altitude biogas digester (top left) and the BSP (Nepal standard) biogas digester, both installed within a high-altitude greenhouse in Mohari village. Bottom pictures show how to fill the digesters with cow dung and incubating bacteria.

With THANKS to all RIDS-Switzerland/Nepal donor, supporters and members for all their participation in 2018. Please continue to come along with us to continue in 2019 and beyond the important work you enable RIDS to do in close partnership with the remote Himalayan mountain villages communities in Humla and Jumla.



People from some of the RIDS-Switzerland/Nepal community development project partnering villages in Jumla and Humla.